

This World Cup T20 Anutone Bowls a Doosra and a Teesra !!!

Anutone makes Soak Cord smarter with new variants

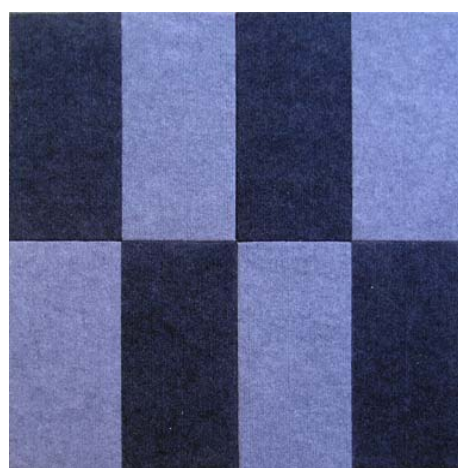
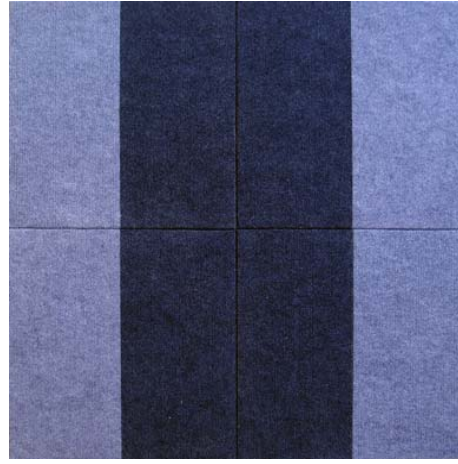
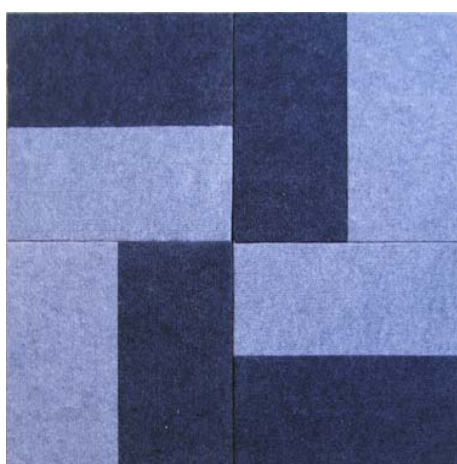
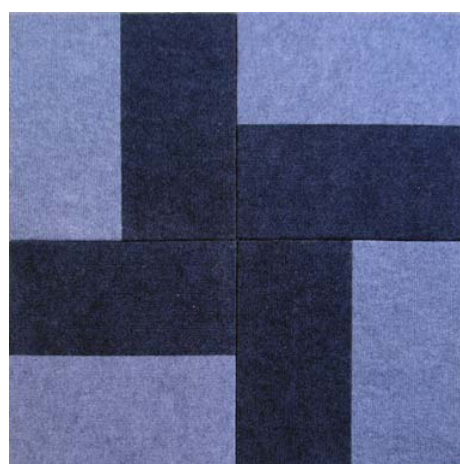
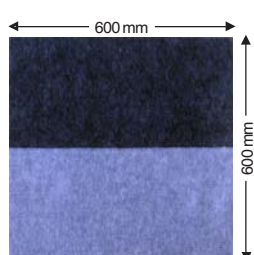
So far the earlier variants were limited to dimensions or core content or surface colors. Now Anutone adds a fresh twist by way of surface patterns that further lead to many exciting variations at site. Check the pictures below.

Since Soak Cord was invented by Anutone in 1996 it underwent innovation in 2006 with Planks and now in 2016 comes Soak Cord Binary and Soak Cord Triangles. The 10-year innovation cycle continues to make walls more dynamic, vibrant and interesting while acoustics is as always built-in.

Talk about getting smarter!!!

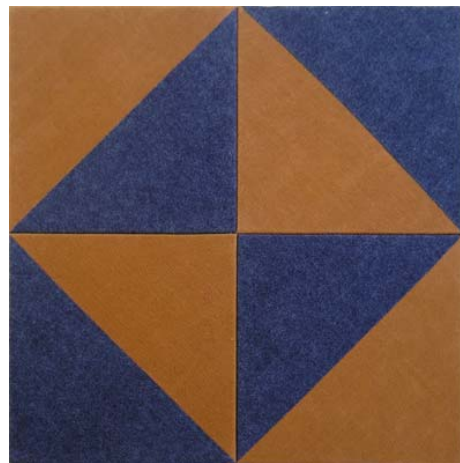
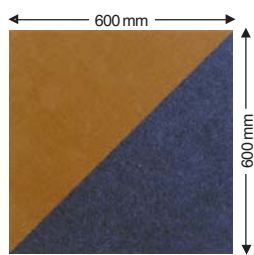
Doosra - Soak Cord Binary

Soak Cord Binary is a two-tone color scheme for 600x600mm wall panels. Any combo of two-tone within the available colors can be ordered. Pattern variations on walls would depend on installation. Check out the pictures.



Teesra - Soak Cord Triangles

Soak Cord Triangles is also a two-tone color scheme for 600x600mm wall panels but the two-tone is triangular shaped that gives rise to a different set of pattern variations on the walls as installed. Check out the pictures and let your imagination soar.



www.anutone.com

Anutone Acoustics Limited, 231, 7th Cross, Indiranagar 1st Stage, Bengaluru 560 038, India.

Phones +9180 4084 3737, 2520 2803, 2520 3114 info@anutone.com

AHMEDABAD • BHOPAL • BHUBANESWAR • CHANDIGARH • CHENNAI • DELHI NCR • GOA • HYDERABAD • KOCHI
KOLKATA • MUMBAI • NAGPUR • PUNE • RAIPUR • RAJKOT • RANCHI • SURAT • VADODARA

Toll Free 1800 103 5505 (9.30am - 6.30pm Mon-Fri)



All logos and brand names are registered trademarks of their respective owners. To ensure delivery to your inbox, please add info@anutone.com to your address book. If you wish to stop receiving our emails, reply with Unsubscribe in the subject line to info@anutone.com.